

Standard Product Features

Bases feature.....

- All welded structural steel bases utilizing 0.25" thick tubular steel supports on maximum 24" centers.
- Fans and coil sections directly supported by structural steel members.

- Stringers ensure that no area of the floor greater than 24" is unsupported.



Standard Product Features

Floors feature....

- Floor construction features a standing seam construction.
- Floor is welded to base with no penetrations through the floor.
- Fully welded seam construction is optionally available.



Aluminum threadplate

Galvanized steel



Standard Product Features

Drainpans featuring.....

- 16 Ga 304 stainless steel construction.
- Double wall design to prevent insulation damage.
- IAQ design for complete drainage
- Coil mounting stand-offs, supported by structural members .
- Copper downspouts
- Maximum 48" between drainpans.



Standard Product Features

Bases featuring:

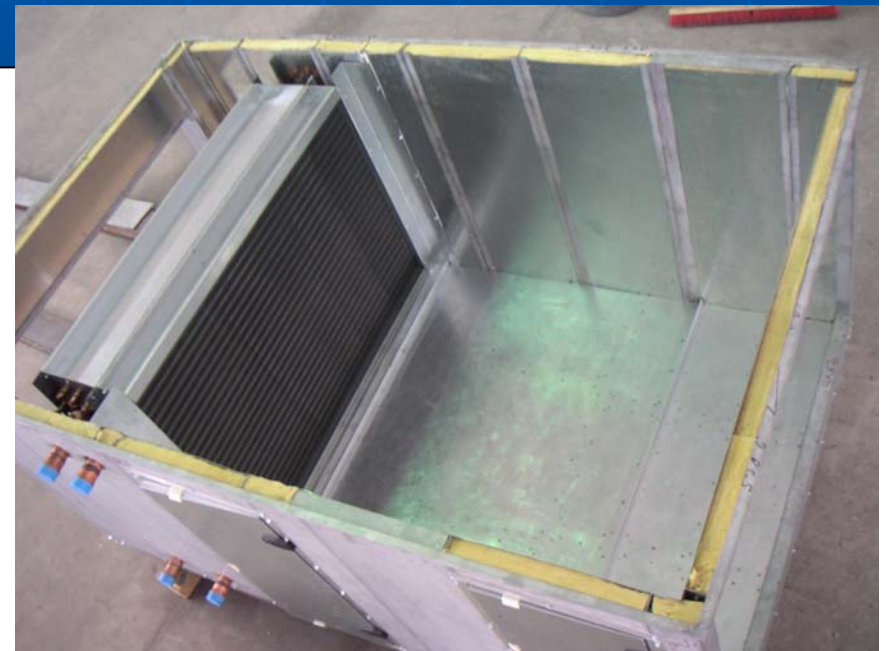
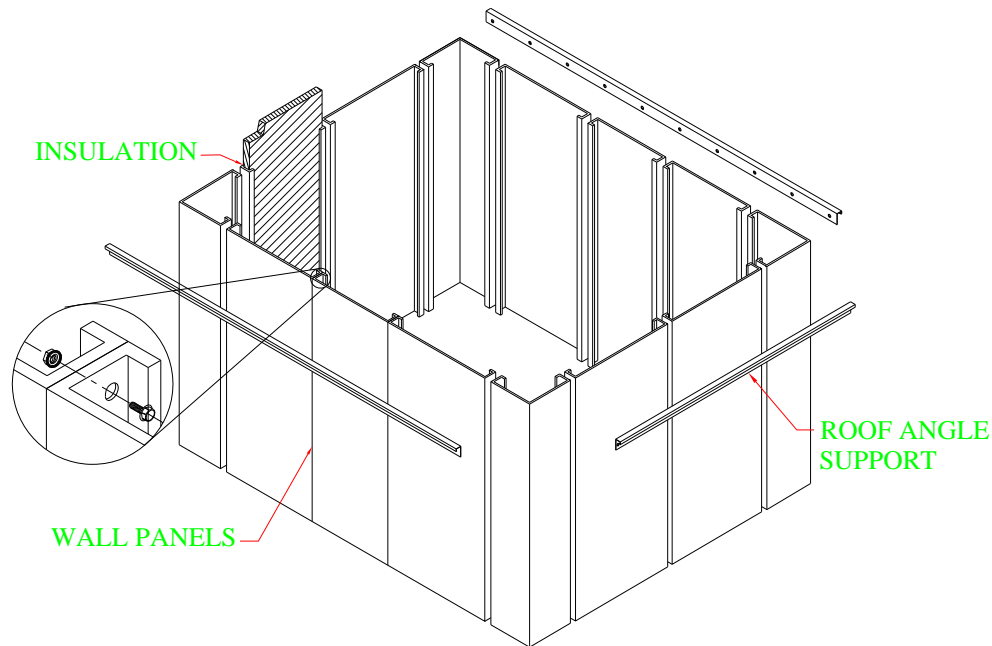
- Bases are chemically cleaned and primer painted with 2-part epoxy paint
- 2" of sprayed R-13 urethane foam insulation is applied.
- Fiberglass insulation is optionally available.



Standard Product Features

Casings feature....

- Bolted standing seam construction of 16 gauge galvanized steel wall & roof panels.
- Seams are sealed with high strength polyurethane sealant.
- 2 inch, 1-1/2lb density insulation is standard.
- Solid or perforated double wall construction.
- No through metal design is available.
- Standard leak specification is less than 1% of airflow @ 1.5 times rated static.



Standard Product Features

Roof construction features....

- Bolted standing seam construction.
- Roof cleat protects exposed seam.
- Roof mounting flange with no penetrations into the air tunnel.
- .25"/foot slope for drainage on outdoor units.



Standard Product Features

Unit coating features...

- All units are protected with a 3mil coating of air dried polyurethane enamel, rated for 2000hr. salt spray per ASTM B-117.
- Base channels are sand blasted to white metal, epoxy primed and coated with a 3mil coating of air dried polyurethane enamel, rated for 5000hr. salt spray per ASTM B-117.
- Color options are available



Standard Product Features

Fans feature...

- Commercial duty airfoil plenum and DWDI.
- AMCA certified for both air and sound.
- 200,000 hour bearings.
- AMCA Arrangement 1,3 or 4 options

AMCA arrangement #4
"Direct Drive" Plenum Fan



AMCA arrangement #3
DWDI Fan



Standard Product Features

Fans feature...

- Welded, structural steel fan bases.
- 2 inch deflection isolators rated for seismic zone 4.
- Isolators supported by structural steel members.
- Motors are wired to an external junction box.
- Adjustable motor bases.
- Air flow monitoring option available.



Standard Product Features

- Coils are commercial quality, ARI certified featuring...

- 16 gauge 304SST casings with extruded tube penetrations for all cooling coils.
- Brazed, thick walled, return bends. No "hairpins" allowed.
- Maximum 48" between drainpans.
- Copper downspouts.
- Cooling coil sections lined with 304SST liners.
- Copper or coated fins for corrosive environments.



Standard Product Features

- High quality leak-tight access doors with extruded aluminum frames, molded nylon conical roller-type latches, injected foam insulation, and heavy-duty die-cast zinc hinges
- Full thermal break construction is standard.
- Out-swing doors have been tested for zero leakage under 8" w.g. of positive pressure.



Standard Product Features

- All aluminum low-leakage dampers
- Overlapping airfoil blades
- Neoprene seals
- Extruded aluminum linkage

